

Library Large Monitor Room Instructions

Using The Computer in Room 211



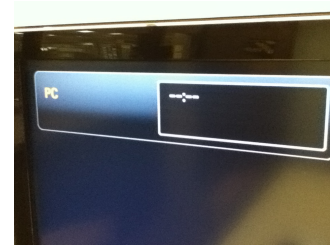
1. Turn the power on the large monitor by pressing the power button just below the screen on the right. Pressing it will cause the red light to flash a few times until it turns on. If the monitor is already illuminated, skip this step.



2. To use the computer in the lab, press the "SOURCE" button (located to the left of the power button) until the monitor displays "HDMI1/DVI".



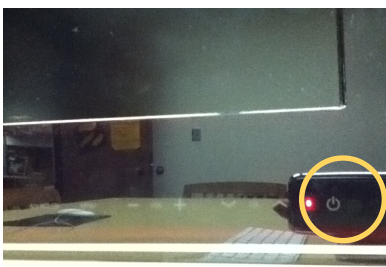
3. To press the until



use a laptop, the "SOURCE" button (located to left of the power button) the monitor displays "PC".



4. If you do not see a picture on the monitor, turn the computer on by pushing the small on/off button on the back of the computer.



5. Please refer to the Dual-Boot Workstation Instructions to use the

computer.

6. When finished be sure to logout of the computer and turn off the power to the monitor.